
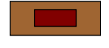








-  Confine comunale
-  Nuclei Storici P.R.G. vigente
- Numero dei piani:
-  1 piano
-  2 piani
-  3 piani
-  4 piani
-  piano unico produttivo
-  Servizi esistenti

PIANO DI GOVERNO DEL TERRITORIO 2012

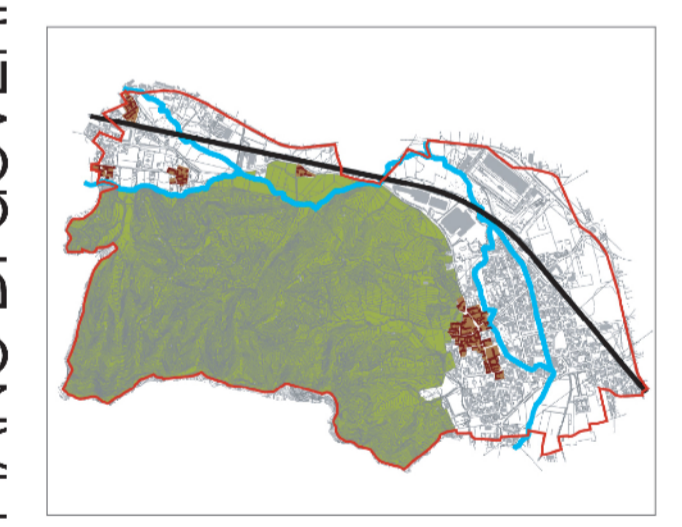
COMUNE DI
AMBIVERE
PROVINCIA DI BERGAMO

PIANO DELLE REGOLE

SISTEMA INSEDIATIVO
Città diffusa

PdR1.3
Tavola propedeutica
dei Tessuti:
Numero piani

scala 1:5000



R2STUDIO via Don Carlo Botta, 9 - 24122 Bergamo tel. fax 035 270074
r2studio@virgilio.it

PROGETTO DEL PIANO

Progettista urbanista
dott. arch. Alessandro Rota Martir

Consulente
dott. ing. Marcello Fiorina

Consulente sostenibilità ambientale
dott. arch. Alessandro Mascheroni
dott. ing. Marta Mascheroni

Consulente storico
dott. arch. Paolo Mazzariol

Consulenza per la componente geomorfologica:
Studio Associato Eurogeo