
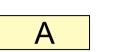

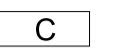

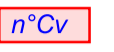


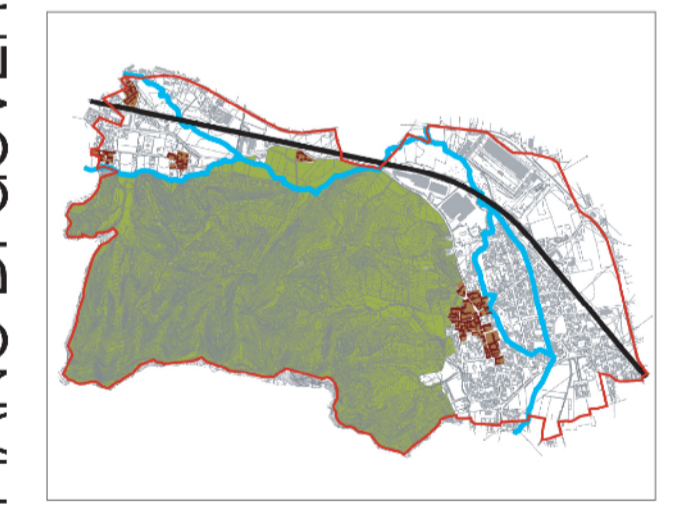
-  Confine comunale
-  A Tessuto urbano consolidato
-  B Ambito di Trasformazione urbana
-  C Ambito extraurbano
-  n°Tep Tep - esercizi pubblici
-  n°Cv Cv - esercizi di vicinato

PIANO DI GOVERNO DEL TERRITORIO 2012



PIANO DELLE REGOLE

PdR6
Componente
commerciale di Piano
scala 1:5.000



R2STUDIO via Don Carlo Botta, 9 - 24122 Bergamo tel./fax 035 270074
r2studio@virgilio.it

PROGETTO DEL PIANO
 Progettista urbanista
 dott. arch. Alessandro Rota Martir
 Consulente
 dott. ing. Marcello Fiorina
 Consulente sostenibilità ambientale
 dott. arch. Alessandro Mascheroni
 dott. ing. Marta Mascheroni
 Consulente storico
 dott. arch. Paolo Mazzariol
 Consulenza per la componente geomorfologica:
 Studio Associato Eurogeo